

Entry 1: Read 12 hour digital and analogue clocks in hours

1. What time is shown by these clocks?



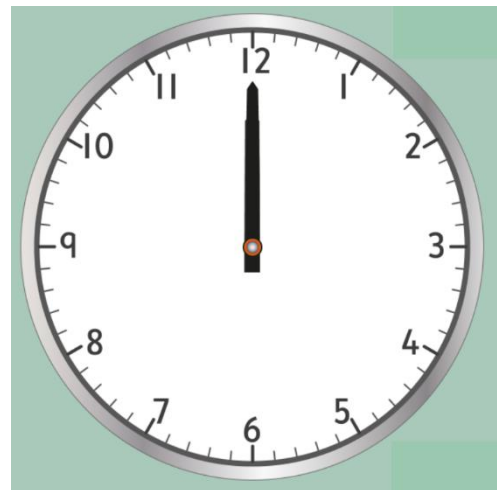
..... o'clock



..... o'clock

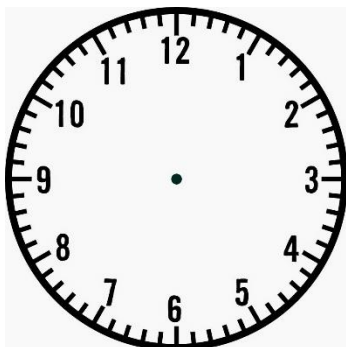


..... o'clock



..... o'clock

2. Draw 11 o'clock in these two clock faces.



3. Libby needs to leave the house at 8. This is what the clock shows.



Is it time for Libby to leave the house? If not, is it early or late?

Answer:

4. Omar thinks it is 5 o'clock. Is he right? Explain.



Answer: